

Report for HOSP

INTEGRATED SUBSTANCE MISUSE & HOUSING CONTRACT

Mike Taylor – Operations Director Society of St James

6th January 2017

Introduction

In December 2016 the Society of St James was awarded the Integrated Substance Misuse and Housing contract by Portsmouth City Council. The following services are included in the service specification.

- Substance Misuse Hub Team, (formerly employed by PCC)
- Central Point Team, (formerly Rethink)
- Medical/Prescribing Team, (employed by Solent NHS Trust)
- Substance misuse Psycho-Social Team, (employed by the Society of St James (SSJ))
- Substance Misuse Housing Team, (employed by SSJ)
- Refit worker, (employed by SSJ)
- PUSH (formerly employed by PCC)

Description of reconfigured services

The main interventions remain unchanged in the new service. However all services have been placed under a single management structure (see fig 1). This allows for better utilisation of the staffing resource.

1. Community Substance Misuse Services

- Assessment, review and case management for people in Portsmouth with substance misuse needs
- Including Pharmacological interventions delivered by Solent NHS Foundation Trust
- Full range of psycho-social interventions including, community rehab, group programme, counselling, residential rehab and detox, arrest referral and management of offenders on Drug Rehabilitation Requirement orders.

The main changes are a change in location - (HOSP already advised) and a general reduction of interventions available due to a reduction in funding. Residential rehabilitation places available reduced by 75%, Counselling reduced by 75%, small reduction in staffing.

Although there is a funding reduction in residential rehab the City retains the Community Rehab which has proven to generate the same success rates as residential services for a fifth of the cost. The counselling has also been reduced, however did not attend rates for the old service were very high and with a smarter targeted approach to referrals the reduction of this impact will be minimised.

2. Specialist Alcohol Accommodation

- 55 Recovery Beds
- Currently in 9 properties
- Moving away from support hours per person depending on the property
- Flexible support hours to meet individual need wherever the person lives
- Will still have dedicated clean and dry beds but may be in smaller properties
- Plans for more home detoxes in the housing provision
- Staff team will work across the service

The society will look to increase the move on accommodation that is available for this group and has already purchased an additional 7 bed property and secured funding for a possible 21 additional bed-spaces.

3. Central Point Homeless day service

- Basic sustenance and support for street homeless
- Outreach support for street homeless
- Signposting
- Basic support, washing facilities, clothing and sustenance

The main changes in Central point include the provision of more services including dentistry, podiatry, and substance use outreach. The extension of then substance misuse data base for better monitoring. Potential to run groups and workshops outside of the rough sleeper sessions and Improve access to the housing provision for rough sleepers and new homeless.

4. PUSH

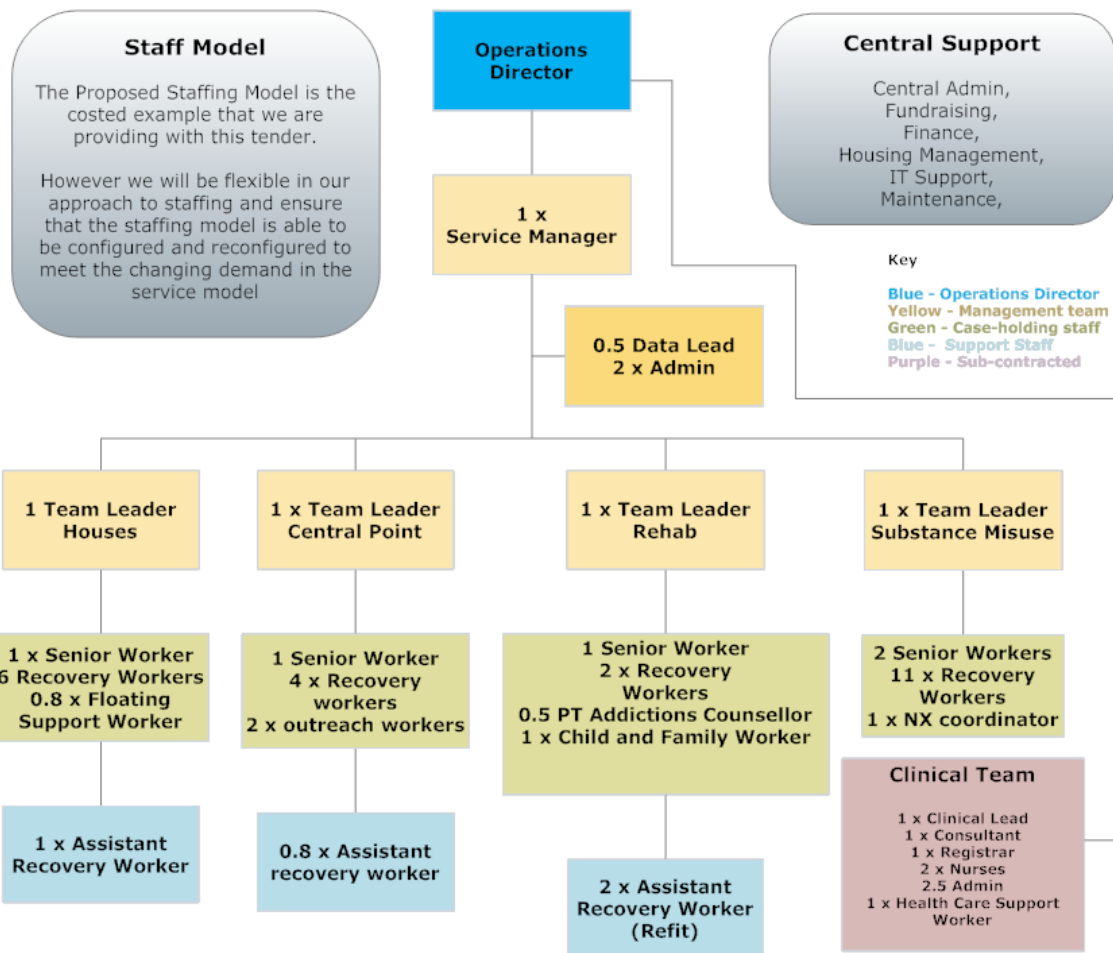
PUSH are a service users peer support and advocacy group that provide the following services:-

- Advocacy for people in Substance Misuse
- Psycho-social groups
- Peer mentors and volunteers for the new services

The Society has currently taken over the management of PUSH and it will be seeking to establish it as a fully independent charity in the term of the contract. The funding for PUSH remains the same.

5. Refit

Refit is a therapeutic sports project that that provides free access to sports activities in partnership with Pompey in the Community. The Society has recently been funded from the Nation Lottery to provide this at approximately £100,000 for the next 5 years.



Staff specialist Leads and Additional non contracted staff

Non Contracted Staff
 Volunteers/Peer workers
 Relief workers
 Student Social Workers Supported by the SSJ student placement Coordinator (estimated 3500 hours per year)
 Operations Security Team 24/7 on site response

Specialist Workers (Staff who will develop specialist knowledge and be given dedicated time)
 Detox Coordinator - responsible for the ambulatory and home detox program
 Data lead - responsible for collecting and analysing data
 NX lead - coordinating the NX provision in the city
 Refit worker - delivering sporting interventions
 Complex needs liaison nurse - to develop seamless pathways with mental health services
 Outreach workers to identify and engage hard to reach groups
 Specialist ACT therapist

Sub Contracted Work
 Refit Coaches and
 Counselling provided by Portsmouth Counselling Service
 Intuitive Recovery and smaller session work with local people with skills e.g. Artists, recovery chefs etc

